

# Eaton 5130 UPS



## Product snapshot

<b>Power rating:</b>	1250 VA/1150W 1750 VA/1600W 2500 VA/2250W 3000 VA/2700W
<b>Voltage</b>	230 Vac, user-selectable voltages
<b>Frequency:</b>	50/60 Hz (auto-sensing)
<b>Topology:</b>	Line interactive, 0.9 power factor
<b>Configuration:</b>	Rack or tower; pedestal and/or rail kit provided

### Advanced power protection for:

- IT and networking environments
- Servers, networking gear
- Telecommunications, VoIP, security systems

## Features

- Protects connected equipment from five of the most common power anomalies: failures, surges, sags, under-voltage and over-voltage
- Provides more real wattage in less space with a 0.9 power factor—to protect more equipment and leave more room to expand IT systems
- Offers the choice of rackmount or tower installation—with space-saving 2U or 3U reduced-depth packages, including internal batteries
- The 2U model is optimized for rack mounting but is easily deployed as a tower with a provided pedestal. The 3U unit is optimized for tower deployment or short-depth racks, which makes it especially suitable for telecom equipment racks
- Load segment control enables prioritized shutdown of non-essential equipment during outages to maximize battery runtime for critical devices
- An optional maintenance bypass module enables the entire UPS to be serviced or replaced without interrupting power to loads.
- Optional external battery modules extend backup runtime up to 4 hours during power outages
- Two-year warranty

The Eaton® 5130 UPS, Powerware® series, offers more power in the same or smaller footprint than previous-generation equivalents, plus new performance features.

### Valued protection at a value price

The 5130 resolves outages, sags, surges, under-voltage and over-voltage conditions—and supplies clean, conditioned power to all connected equipment.

The UPS is value-priced, but it delivers features you would normally expect to find in much higher priced systems, such as: load segment control, hot-swappable battery modules, long battery runtime options, multiple communication options, high output power factor and high power density—all in a sleek, modern package.



Powering Business Worldwide



2U rackmount installation



2U tower installation



Rail kit



Tower pedestals



Load segments



Front panel LEDs

## More power in less space

**High power density.** Compared to earlier generation technologies, the 5130 powers more servers in less space, delivering up to 3000 VA in only 2U—including internal batteries. A 3U model is available for short-depth racks, commonly used for telecom equipment. High power density frees up rack space for more IT equipment, future expansion, or simply to have more room for airflow and heat dissipation.

**High 0.9 power factor.** Even though it occupies minimal rack space, the 5130 delivers significantly more real output wattage—more real power to your protected load. The difference is a very high 0.9 power factor, a measure of apparent power versus real power. By delivering more real output power, the 5130 powers more servers than another UPS of equivalent VA rating with a lower power factor.

**Maximum deployment flexibility.** The 5130 can be deployed as a tower unit or in a rack; pedestal and rail kits are included at no extra charge. This UPS also works with PDUs (power distribution units) to flexibly distribute power. The PDU enables quick and easy connection of varied load types without help from an electrician—great for responding to frequent moves, adds and changes.

## Maximum availability for critical systems

**More battery runtime for important systems.** If the power goes out, you want to reserve available battery runtime for the most essential loads. With the 5130's load segmentation feature, you can independently control output receptacles. You can shut down power to less essential loads to extend available runtime for more critical devices.

**Load segment control** can also be used to remotely re-boot locked-up network equipment or manage scheduled shutdowns and sequential startups of connected equipment.

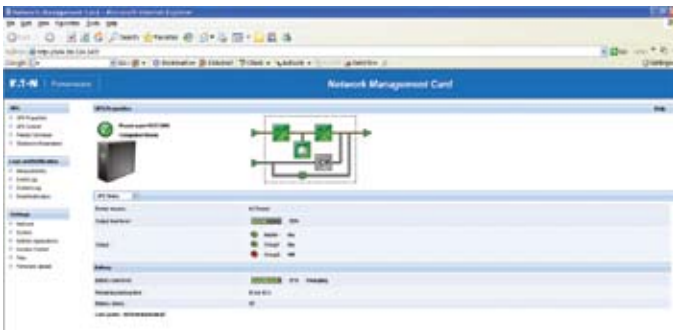
**Battery runtime for minutes or hours.** During a power outage, internal batteries in the 5130 keep loads running for up to 16 minutes (depending on load), long enough to gracefully shut down systems. You can add more runtime with up to four external battery modules to run systems for hours if necessary. Each external battery module occupies only 2U for most models (3U for reduced depth, 3000 VA models)—and provides more than an hour of runtime for a fully loaded UPS.

**Service without downtime.** With hot-swappable batteries, one person working alone can replace a battery module without disrupting data center operations or power to protected equipment. With an optional, multi-mount hot-swap maintenance bypass module, you can even remove and replace the entire UPS without powering down connected loads.

## Visibility, control and management from anywhere

**Local UPS status at a glance.** LEDs on the front panel of the 5130 give you a quick read of UPS status. Audible indicators alert you to abnormal conditions.

Are internal batteries weak or low? Is there a site wiring fault? How much load is the UPS supporting, relative to its capacity? Is it at risk of overload? You get up-to-the-minute answers to these and more critical questions.



ConnectUPS-MS Network Management Card web interface

**Choice of communication options.** You would expect UPSs in this class to have one slot for a serial communications card, but the new 5130 has two built-in serial ports (one USB and one RS-232) plus an extra slot for another communication card to support Web or SNMP. Connectivity options are available to suit nearly any communication requirement.

**Enhanced monitoring.** With new card options, the UPS can communicate directly with network/ building management systems, environmental monitors, relay contact devices, multiple servers and other UPSs—in a variety of networking environments.

**Unified management for power protection.** The 5130 comes complete with the Eaton Software Suite CD, including SNMP-compatible power management software. LanSafe® & Netwatch provide control and visibility over multiple UPSs, using an intuitive, graphical interface. From a central vantage point anywhere within the reach of a network connection, you can:

- Establish prioritized shutdown of network devices and client/ server applications
- Test all network-connected UPSs from one node
- Stay informed of power problems via email broadcasts

## BATTERY BACKUP TIMES (IN MINUTES)\*

### Rack/Tower Models

Load (VA/Watts)	Internal batteries	+1 EBM	+2 EBMs	+3 EBMs	+4 EBMs
<b>PW5130i1250-XL2U</b>					
125/115	119	430	741	1052	1363
313/288	32	150	267	384	502
625/575	15	58	100	143	185
938/863	6	42	77	113	148
1250/1150	5	29	54	79	104
<b>PW5130i1750-XL2U</b>					
175/160	80	245	410	575	740
438/400	24	96	168	240	312
875/800	9	36	62	89	115
1313/1200	6	24	42	60	79
1750/1600	3	16	28	41	53
<b>PW5130i2500-XL2U</b>					
250/225	77	300	410	780	1064
625/563	28	122	207	309	412
1250/1125	11	55	100	150	206
2153/1938	6	31	59	90	120
2500/2250	3	23	42	63	85
<b>PW5130i3000-XL2U/XL3U</b>					
300/270	70	242	448	634	820
750/675	24	105	180	255	330
1500/1350	10	44	73	101	130
2250/2025	5	25	47	69	91
3000/2700	3	17	32	47	62

\*Battery backup times are approximate and may vary with equipment, configuration, battery age, temperature, etc.

## RACK/TOWER MODELS

Catalog number	Style number	Rating (VA/Watts)	Input connection	Output receptacles <sup>1</sup>	Dimensions H x W x D, mm	Weight, kg
<b>Rack/Tower Models</b>						
PW5130i1250-XL2U	103006590-6591	1250/1150	IEC C14-10A	(8) IEC-C13-10A	86 x 441 x 509	24,3
PW5130i1750-XL2U	103006591-6591	1750/1600	IEC C14-10A	(8) IEC-C13-10A	86 x 441 x 509	26,6
PW5130i2500-XL2U	103006592-6591	2500/2250	IEC C20-16A	(1) IEC-C19-16A (8) IEC-C13-10A	86 x 441 x 634	33,8
PW5130i3000-XL2U	103006593-6591	3000/2700	IEC C20-16A	(1) IEC-C19-16A (8) IEC-C13-10A	86 x 441 x 634	33,8
PW5130i3000-XL3U	103006594-6591	3000/2700	IEC C20-16A	(1) IEC-C19-16A (8) IEC-C13-10A	131 x 441 x 484	34,3
<b>Rack/Tower Extended Battery Modules</b>						
PW5130N1750-EBM2U	103006587-6591	NA	NA	NA	86 x 441 x 509	30,4
PW5130N3000-EBM2U	103006588-6591	NA	NA	NA	86 x 441 x 634	41,7
PW5130N3000-EBM3U	103006589-6591	NA	NA	NA	131 x 441 x 484	41,7

1. All models are equipped with (2) load segments (programmable outlets).

# Technical specifications

## General

LEDs	13 status-indicating LEDs
Topology	Line interactive
Diagnostics	Full system self-test at power up
Transfer time	1–4 ms typical
R00/RPO	Rear deck emergency stop connector (for remote on/off and power off)
Rail kit/tower stand	Included with all units

## Electrical Input

Nominal voltage	230 Vac
Voltage range*	160–294 V
Frequency	50/60 Hz
Frequency range	47–70 Hz for 50 Hz operation 56.5–70 Hz for 60 Hz operation
Power draw of UPS (full load)	1250: 5.4A @230V 1750: 7.6A @230V 2500: 10.9A @230V 3000: 13.0A @230V

Dedicated circuit breaker rating	700–2000 VA: 10A 3000 VA: 16A
----------------------------------	----------------------------------

## Electrical Output

Power factor	0.9
On utility voltage regulation	184–265 Vac
On battery voltage regulation	-10%, +6% of nominal
Efficiency	Normal or line mode: >94%
Frequency regulation	0,1 Hz online
Over current protection	Electronic current limit
Load crest factor	3:1
Load segments	Two individually controlled output receptacles

## Battery

Internal battery type	1250/2500 VA: 12V/7.2 Ah; sealed, lead-acid; maintenance free 1750/3000 VA: 12V/9 Ah; sealed, lead-acid; maintenance free
EBM battery type	12V/9Ah

\* The high and low thresholds can be user adjusted using the downloadable UPS Configuration tool.

In the interests of continual product improvement all specifications are subject to change without notice.

Battery runtime	1250 VA: 5 min w/internal batteries @100% load (0.9 PF) 1750 VA: 3.5 min w/internal batteries @100% load (0.9 PF) 2500–3000 VA: 3 min w/internal batteries @100% load (0.9 PF)
-----------------	--

Battery replacement	Hot-swappable internal batteries
Start-on-battery	Allows start of UPS without utility input

## Communications

Serial port	RS-232 (RJ45) port
USB port	As standard (HID), for communicating with Windows XP/Vista
Optional communication cards	ConnectUPS-MS Network Management Card, Relay/Serial Management Card -MS
Cables	RS 232 and USB 2 m communications cables included
Power management software	Eaton Software Suite CD-ROM (bundled with UPS)

## Environmental

Safety markings	CE; C-Tick; TUVus
Safety conformance	IEC/EN 62040-1-1, UL 1778
EMC compliance	IEC/EN 62040-2 EN 50091-2 class B
Operating temperature	0°C to +40°C
Storage temperature	-15°C to +50°C
Relative humidity	20–95% non-condensing
Audible noise	Max 45 dBA

## Heat dissipation table (battery fully charged)

5130 model	Line mode, BTUs/hr	Battery mode, BTUs/hr
1250 VA	250	1682
1750 VA	348	2340
2500 VA	490	2559
3000 VA	588	3071

